

# Wireless IoT Sensor Solution

Water Level Measurement

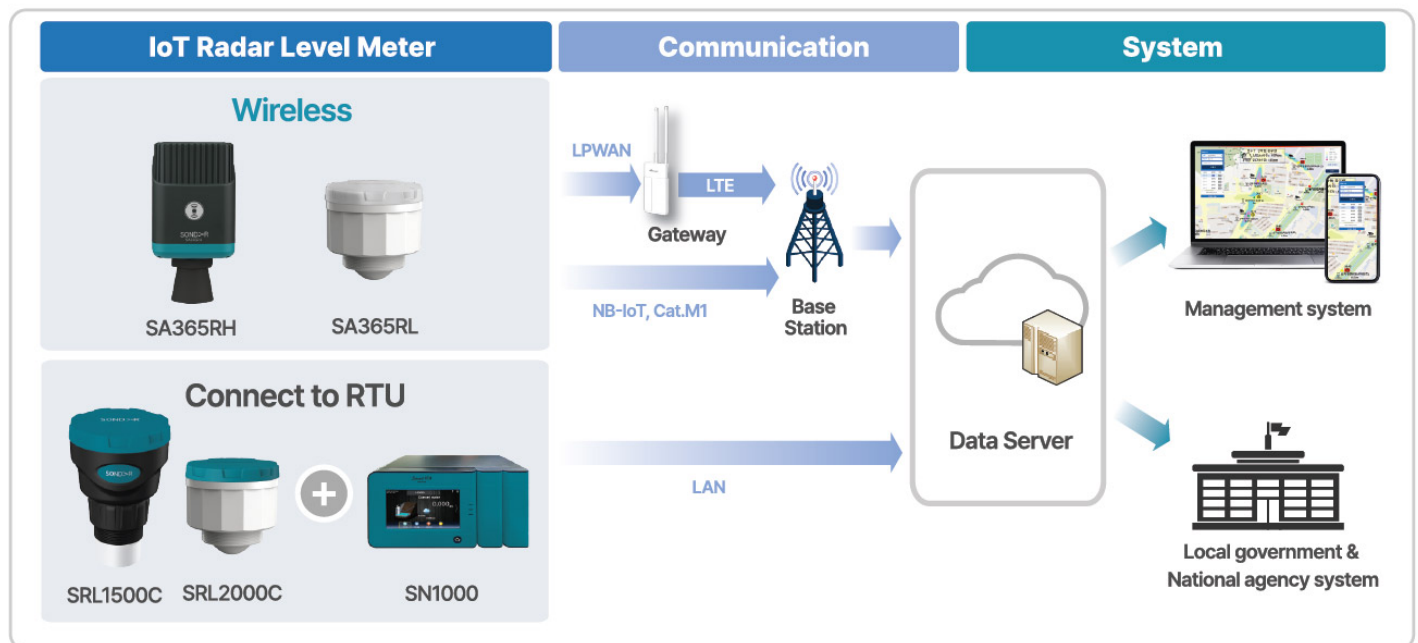
Sewer system · Small river · Urban flood depth



## ISTEC is a IoT sensor solution company

providing **Golden Hour Solutions** with IoT level meters and management system for saving human lives and social costs from water-related disasters such as urban floods and river overflow, etc.

## System Overview



## Applications

### Sewer system



### Pilot test in Seoul capital city

First **Wireless** radar level meter in Korea installed and operated from June 2024



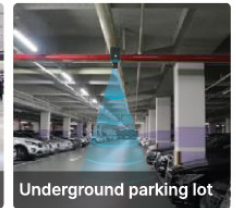
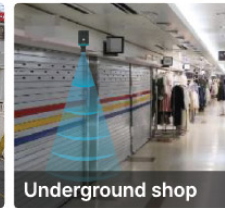
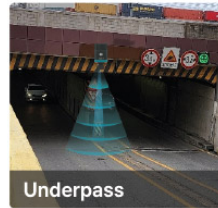
### Urban flood depth



### Small river level



### Underground facilities



# SOND>R Air

## WIRELESS IoT Level series for golden hour solutions

### New Radar Level Meter



SA365RH



SA365RL



#### All-in-1

Sensor, battery, communication are all installed in the compact size



#### Simple installation & maintenance

No line construction, Install anywhere



#### Remote setting for sensing/transmission interval

Short cycle only during heavy rains (once per 30sec)



### SAVE TIME & COST

**For frequent transmission & power**  
Connect IoT level meter to Smart RTU.

## Specifications

|                  | IoT Radar Level Meter |           |                 |           | Smart RTU     |
|------------------|-----------------------|-----------|-----------------|-----------|---------------|
|                  | Wireless              |           | Connect to RTU  |           |               |
| Model            | SA365RH               | SA365RL   | SRL1500C        | SRL2000C  | Model         |
| Measuring range  | 0.2 ~ 15m             | 0.2 ~ 20m | 0.2 ~ 15m       | 0.2 ~ 20m | SN1000        |
| Beam angle       | 10°                   |           | 10°             | 6°        | Display       |
| Frequency        | 60GHz                 |           | 60GHz           |           | Temperature   |
| Sensor material  | PP                    |           | PVDF            |           | Channel/relay |
| Temperature      | -30°C ~ 70°C          |           | -30°C ~ 70°C    |           | Input         |
| Communication    | NB-IoT, Cat M1        |           | 4-20mA / RS-485 |           | Material      |
| Protection class | IP68                  |           | IP67            | IP68      | Power         |
|                  |                       |           |                 |           | Output        |
|                  |                       |           |                 |           | Transmission  |

\*Product design and specification can be changed.



# Installation Cases in areas vulnerable to flooding

Since 2005, ISTECH has been providing early warning solutions combining sensors and communication.

### Flood prone road (Sejong City)



### River level (Pocheon City)



### Flood prone area (Incheon City)



### Underpass level (Seoul City)



### River level (Incheon City)



### Flood prone road (Yeongwal)



### Flood prone road (Asan City)



### River level / flow (Seongnam City)



**IS Technologies Co., Ltd.**

M-1602,1603, Songdo IT Center, 32, Songdogwahak-ro, Yeonsu-gu, Incheon, Republic of Korea

H. [www.istec.co.kr](http://www.istec.co.kr) T. 032-850-2600 E. [wm\\_sales@istec.co.kr](mailto:wm_sales@istec.co.kr)